

Eugene Office of 4

Indoff

consult | design | source | install

Estimate Date 3-8-2014

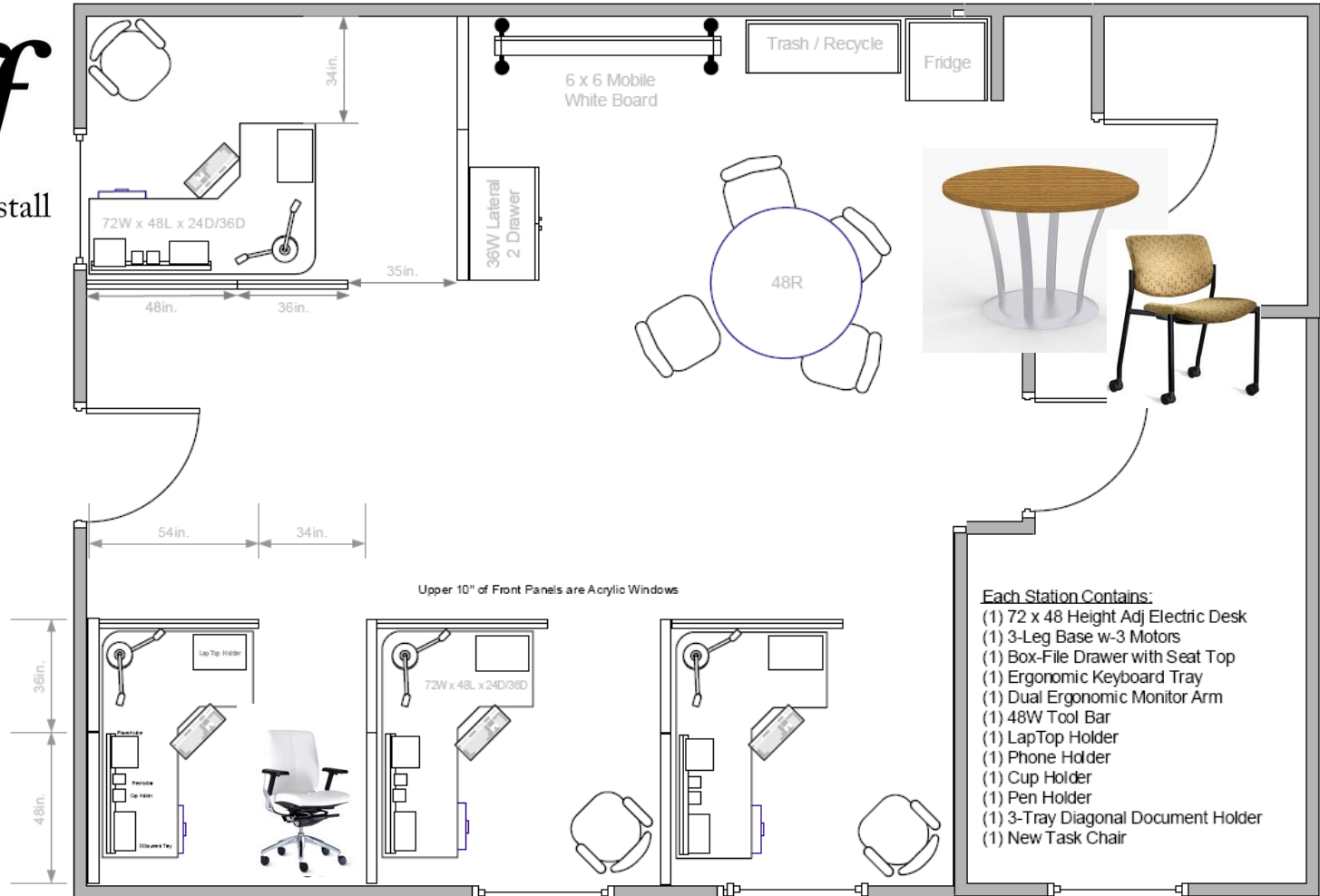
By: Ron Swanson, CEAS 1
Regional Manager



Workrite
ergonomics*

SPECIAL T

9to5
seating



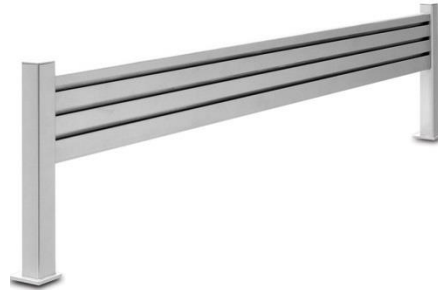
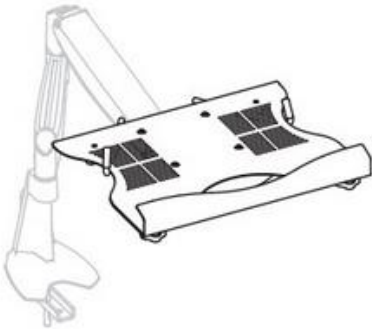
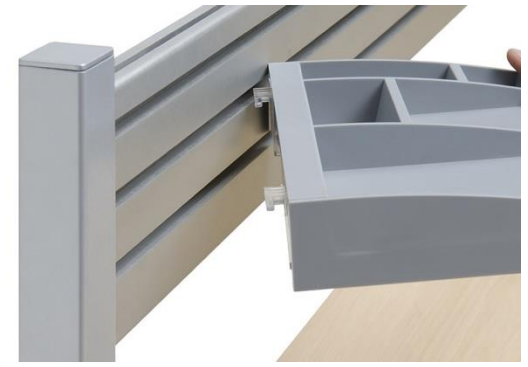
- Each Station Contains:**
- (1) 72 x 48 Height Adj Electric Desk
 - (1) 3-Leg Base w-3 Motors
 - (1) Box-File Drawer with Seat Top
 - (1) Ergonomic Keyboard Tray
 - (1) Dual Ergonomic Monitor Arm
 - (1) 48W Tool Bar
 - (1) LapTop Holder
 - (1) Phone Holder
 - (1) Cup Holder
 - (1) Pen Holder
 - (1) 3-Tray Diagonal Document Holder
 - (1) New Task Chair

Indoff Inc. Corporate Office
11816 Lackland Drive
St Louis, Missouri, 63146
Mailing: PO Box 842808
Kansas City, Missouri, 64184
(314) 997-1122

314-997-1122

541-359-4570

Indoff Oregon Regional Office
1314 Leaf Lane, Creswell, Oregon 97426
Warehouse
4660 Main St, Springfield, Oregon, 97478
(541) 741-7417



Structure Fountain Table

Table Shape: Round

Table Size: 48"

Laminate Color: Zebrawood - Premium

Edge Type: Standard Edge

Edge Profile: 3mm Vinyl Edge

Edge Color: Clearwood Zebra

Base Colors : Metallic Silver

Grommet Option : Round Grommet, Black



3-Leg Offset Corner



Worksurface Laminates



Worksurface Edgeband

