

# Indoff

12-23-2013, Quote #2

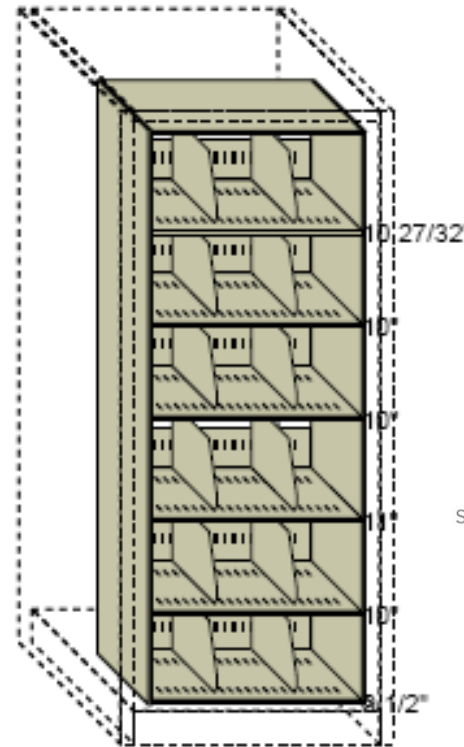
Proposal By: Ron Swanson

## Additional Info:

- **5 Drawer Lateral File**
- Overall Width: 36.5"W
- Overall Depth: 31"D
- Overall Height: 71"H
- **576" Lineal Storage**
- **Lead time 6-7 weeks**



**Installed Price \$6,100.00**



## Rotary Files



### STANDARD LEAD TIME COLORS



BLACK\*  
T25



LIGHT GRAY  
T47



GRAY MIST  
T86



MEDIUM GRAY METALLIC  
T23



TAN METALLIC  
T56



WARM BROWN\*\*  
T22



BONE WHITE\*\*  
T15



IVORY  
T48

### Indoff Incorporated

Please Direct Payments to:

PO Box 842808, Kansas City, Missouri, 64184

### Corporate Offices

11816 Lackland Dr, St Louis, Missouri, 63146

314-997-1122

541-359-4570

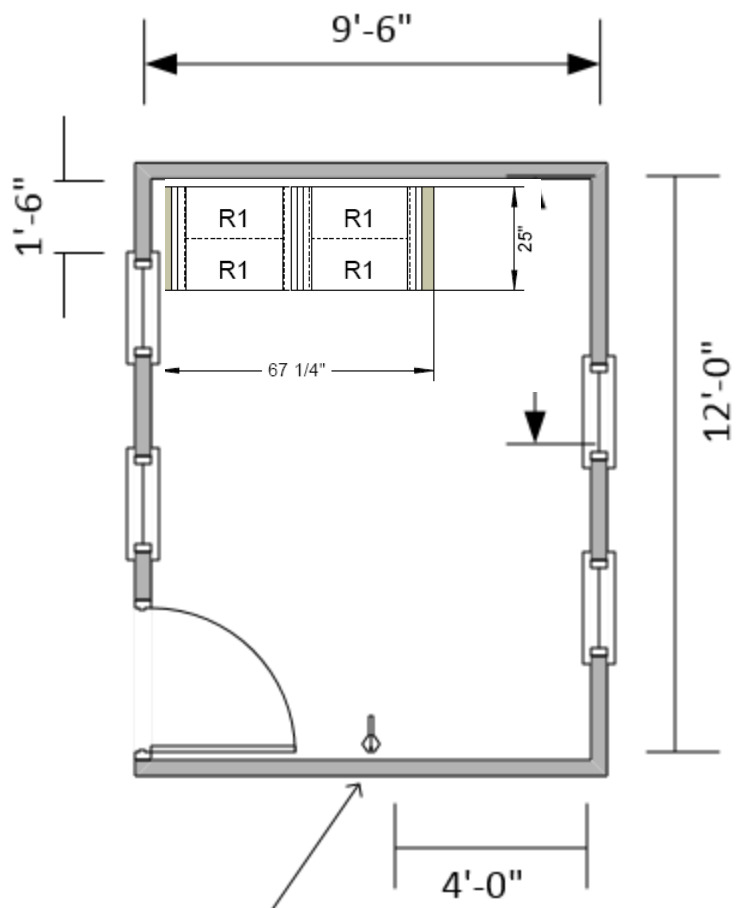
### Indoff Regional

(Office)

1314 Leaf Lane, Creswell, Oregon 97426

### Warehouse

4660 Main St, Springfield, Oregon, 97478



HVAC Controls  
 18" from door  
 x 42H

84" Vertical Clearance.  
 Fire Extinguishers at 9'6"  
 Sills are at about 60H

# Indoff

12-23-2013, Quote #3

Proposal By: Ron Swanson

## Additional Info:

- 49 Shelves 36w x 12d x 76.25e
- Overall Height: 81.25"H
- 1666" Lineal Storage
- Lead time 6-7 weeks



**Installed Price \$8,570.00 \***

**SpaceNow!**  
CORPORATION

## Indoff Incorporated

Please Direct Payments to:

PO Box 842808, Kansas City, Missouri, 64184

## Corporate Offices

11816 Lackland Dr, St Louis, Missouri, 63146

314-997-1122

541-359-4570

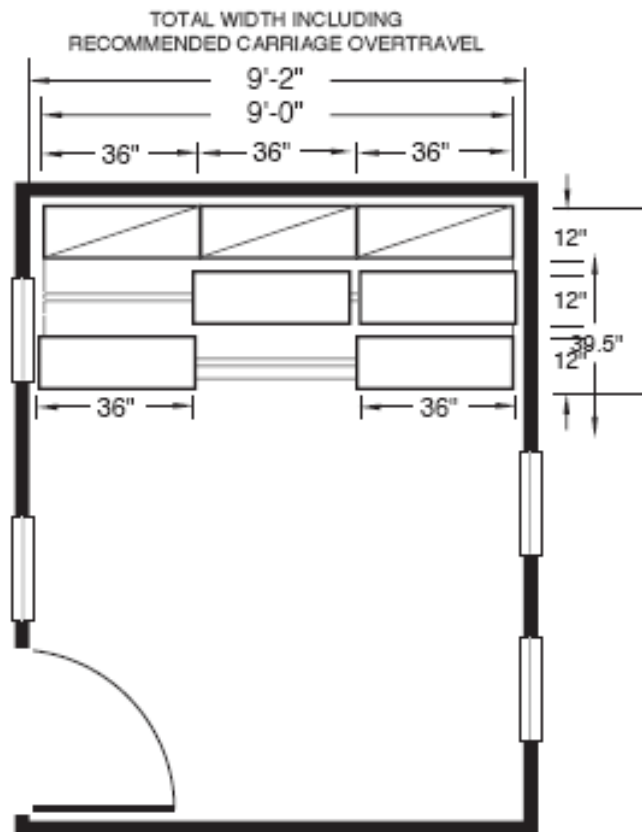
## Indoff Regional

(Office)

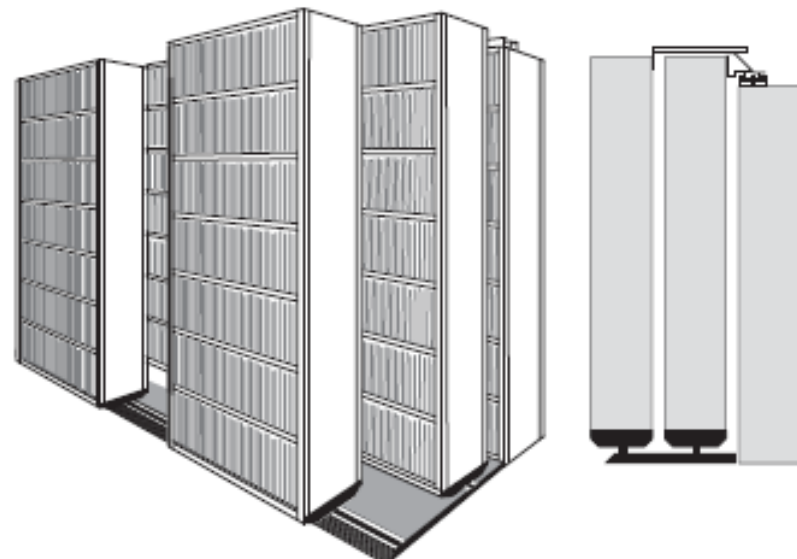
1314 Leaf Lane, Creswell, Oregon 97426

## Warehouse

4660 Main St, Springfield, Oregon, 97478



7 SHELVING SECTIONS: 12" DEEP X 36" WIDE X 76-1/4" HIGH  
 7 OPENINGS PER SECTION  
 CLEARANCE BETWEEN SHELVES: 9-3/4"  
 OVERALL SYSTEM HEIGHT: 81-1/4"  
 TOTAL CAPACITY THIS LAYOUT: **1,666** FILING INCHES



# Indoff

12-23-2013, Quote #4

Proposal By: Ron Swanson

## Additional Info:

- 64 Shelves 48w x 12d x 76.25
- Overall Width: 101"W
- Overall Depth: 48"D
- Overall Height: 80.25 "H
- Black Powder Coated Frame F
- 1904" Lineal Storage
- Lead time 6-7 weeks

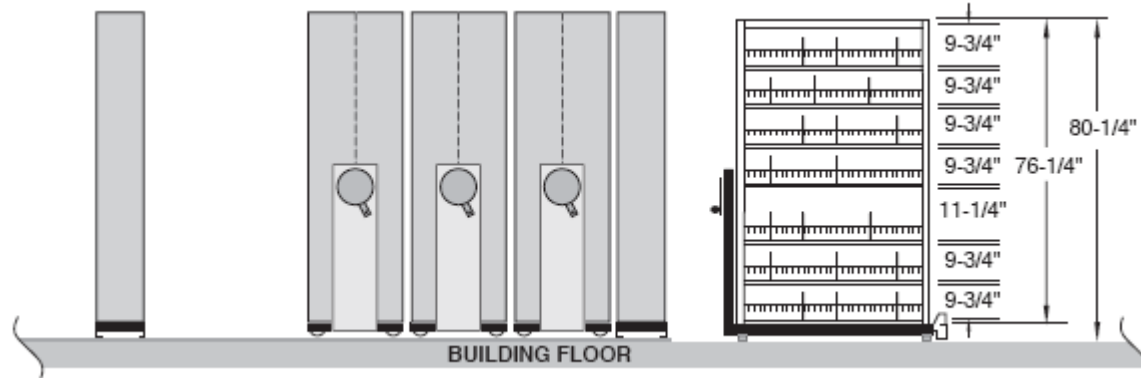


## Trackless High Density System



**SpaceNow!**  
CORPORATION

Installed Price \$11,400 \*



### Indoff Incorporated

Please Direct Payments to:

PO Box 842808, Kansas City, Missouri, 64184

### Corporate Offices

11816 Lackland Dr, St Louis, Missouri, 63146

314-997-1122

541-359-4570

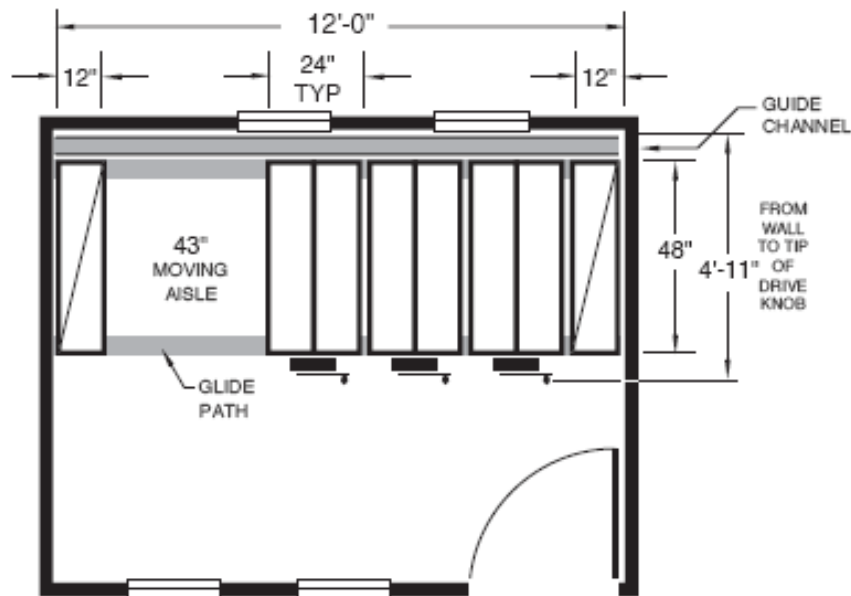
### Indoff Regional

(Office)

1314 Leaf Lane, Creswell, Oregon 97426

### Warehouse

4660 Main St, Springfield, Oregon, 97478



# NoTrac<sup>®</sup> Moving-Aisle System With GlidePath<sup>™</sup>

© Copyright 2011 SpaceNow! Corporation. ALL RIGHTS RESERVED. This material is the property of SpaceNow! Corporation to be used exclusively for promoting the sale of SpaceNow! products. Reproduction in any form or use for any other purpose without written permission of SpaceNow! is expressly prohibited by law.

8 SHELVING SECTIONS: 12" DEEP X 48" WIDE X 76-1/4" HIGH  
7 LEVELS PER SECTION  
CLEARANCE BETWEEN SHELVES: 6@9-3/4", 1@11-1/4"  
OVERALL SYSTEM HEIGHT: 80-1/4"

TOTAL CAPACITY THIS LAYOUT: 1,904 FILING INCHES

NOTE: SHELVING SECTIONS SHOWN BACK-TO-BACK ARE NORMALLY SUPPLIED AS ONE-PIECE, DOUBLE-FACE UNITS. NOTE: FILING INCHES, IF SHOWN, IS THE ACTUAL NET CAPACITY OF THE SHELVES BETWEEN THE UPRIGHTS.

